

# WiFi Central Command Unit (ciblesCOM)

**BAUR SA**

Corniche 9  
CH-2024 St-Aubin-Sauges

Tél. +41 (0) 32 835 16 55  
Fax +41 (0) 32 835 34 69  
[www.baur.ch](http://www.baur.ch)



## Description:

Central Command Unit (CCU) for target systems based on wireless transmission technology (802.11b WiFi).  
The ciblesCOM software suite allows you to create custom training programs for shooting ranges as well as providing the user with complete review capabilities.

## Typical use:

Law enforcement & special forces units, infantry, mechanized troops engaged in urban warfare training or outdoor environments.  
Snipers (with full integration of LOMAH system).

## Information exchange:

ciblesCOM software allows you to display real-time data provided by the Baur SA target systems, including those delivered by accessories such as the LOMAH (Location Of Miss And Hit).

## Results:

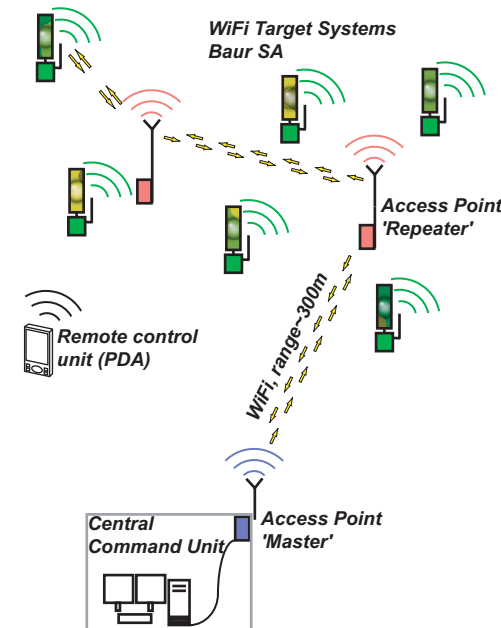
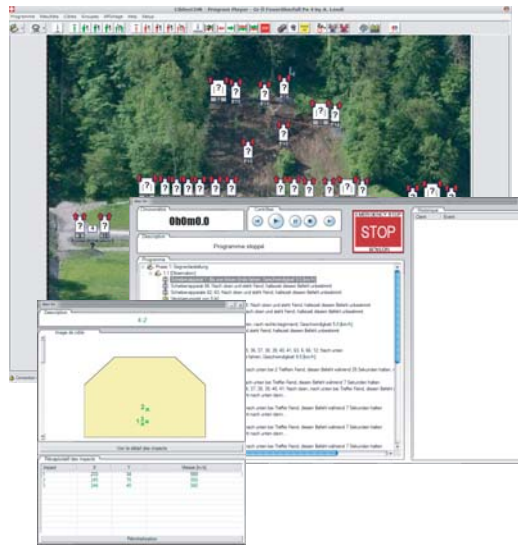
Easy post training analysis and evaluation thanks to the information provided by the software suite.

## Programming:

All programming is done by mouse click. No formal programming required.  
The programs generated are easy to understand (If target X is hit then ...)

## Language:

Software and online help available in English, French and German



## Central Command Unit WiFi

### Technical specifications:

Number of systems that can be controlled:  
~500

Type of targets: Inf. target Baur SA  
Tank target Baur SA  
Moving target carrier  
WiFi camera  
Specific adaptation

LOMAH: SIUS

Available hardware platforms:

- PC
- Laptop
- Tablet PC
- Tablet PC Rugged

### Key features:

Maximum flexibility to design and take advantage of a shooting range

Compatible with most WiFi devices available on the market (Access Points, Clients, etc)

Thanks to the WiFi technology, the installation costs are drastically reduced and deployment costs are eliminated

Can be installed on a Tablet PC to provide a fully mobile Central Command Unit

### Accessories:



Remote control unit (PDA)



Industrial WiFi solution



WiFi camera

### Minimum configuration:

- WiFi coverage
- PC  
[ Windows XP, Pentium 1GHz, 512 Mo RAM, 2 displays (Recommended) ]
- targets

Subject to change without notice  
© 2006 Baur SA